

ABGA Animal Details

AMANI WILBUR (10408891)

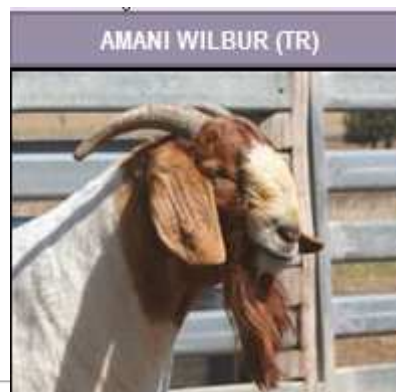
[First](#) [Previous](#) [Next](#) [Last](#)

[Home](#) [Information](#) [Animal Inquiry](#) [Member Inquiry](#) [Sale Catalogs](#) [Semen Catalogs](#) [Show Listing](#) [Download Files](#) [Online Transactions](#)

Regn. No.: 10408891
Reg. Status Registered
Sex: Buck
Tattoo: 5UB FA0049
Birth Date: 09/22/2005
Number in Birth: 3
Color: WHITE, RED HEAD
Herdbook Section: Fullblood
Points/Ennobled Points: Ennoblement: 15/Unassgn: 64
Individual Points: Unassgn: 9
Progeny Points: Ennoblement: 15/Unassgn: 55
Status: Active
Breeder: AMANI BOER GOAT STUD
Current Owner: [Norman & Kathy Kohls](#)
Horn: Horned
Progeny: [\[View All\]](#) [\[View by Herd\]](#)
Progeny with Points: [\[View All\]](#)

Events

[Jun 09 - Grand Summit Boer Goat Show - FB Bucks 24-36 Months](#)
[Jun 09 - Grand Summit Boer Goat Show - Sr Grand Champion FB Buck](#)
[Jun 09 - Grand Summit Boer Goat Show - Grand Champion FB Bucks](#)



Shown at the Grand Summit Boer Goat Show and took Senior Grand Champion Fullblood buck and Grand Champion Fullblood Buck.

— [*SA 493/718 \(*PEDFA493718\)](#)

— [*AMANI LANCELIN \(*5UBFU0023\)](#)

— [*SA 493/736 \(*PEDFA49736\)](#)

— **Sire:** [*AMANI LANCELOT \(*10408675\)](#)

— [\(*931\)](#)

— [*AMANI U040 \(IMP SAF\) \(ET\) \(*UB0040\)](#)

— [\(*E753\)](#)

Animal: [AMANI WILBUR \(10408891\)](#)

— [*5FBFU028 \(*UB0028\)](#)

— [*AMANI NORMAN \(*10408670\)](#)

— [*AMANI U040 \(IMP SAF\) \(ET\) \(*UB0040\)](#)

— **Dam:** [*AMANI F X2073 \(TW\) \(*10408672\)](#)

— [*AMANI LANCELIN \(*5UBFU0023\)](#)

— [*AMANI TESS \(*10408671\)](#)

— [*AMANI U037 \(*10408669\)](#)

Wilbur is an outstanding Amani sire with incredible character in his head and a robust, well balanced body. He is particularly strong down his top and through his rear leg musculature. His style is typical of his sire, Amani Lancelot, who is proving to be one of the leading sires of the time.

Wilbur was the primary pick of Dirk Louw who assisted in the selection of the foundation bucks to come to the NUSSA flock being established here in the United States with Chalk Creek Boers.

At the 2007 Australian National Championships, Wilbur was awarded a fifth place in a large class reinforcing his position as a member of the selected few included in the Terraweena live export team sent on, from the Championships, to the US in July 2007.

Wilbur hails from the famous Australian Amani Stud, based largely on the genetics of Dirk Louw of Namibia. Dirk Louw genetics have already made their stamp world wide. Names such as "Lancelot" and "Atlantis" in Australia and "freight Train" here in America, are already highly regarded and synonymous with quality - NUSSA

